



INVEST IN
**South
Lakeland**

Low Sizergh Barn

Success built on a passion for farming,
food and the countryside



Low Sizergh Barn

Success built on a passion for farming, food and the countryside

INVEST IN
**South
Lakeland**

Low Sizergh Barn has been operating from its base in South Lakeland for over twenty years. Its home has been a working farm on the site since the thirteenth century, which was originally the home farm of Sizergh Castle, providing food for the Strickland family estate.

Today, Low Sizergh Barn comprises of a farm shop and tea room, together with craft and gift galleries, all located in a late 17th century Westmorland stone barn. Low Sizergh Farm is home to 150 red, brown, black and white cows (it's a cross bred herd of Holsteins, Swedish Red and Montbeliards), 700 hens, and a flock of 200 Swaledale and Mule sheep - and currently provides jobs for over fifty human beings too!

The farm now sends many thousands of litres of milk to Kendal to be made into desserts and yogurt, some to a local ice cream maker, Windermere Ice Cream Company, and to a Lancashire cheesemaker to be made into a Kendal Creamy cheese.

The farm shop is spread over three floors and includes exhibiting local artists in the gallery section.

The shop sells well known local brands including the Sedbergh Soap Company, Herdy, Wilson's Kendal Mint Cake, Hawkshead Relish, Cartmel Sticky Toffee Pudding, Kendal Cordials, Coniston Brewery, Farrer's Tea and Coffee - as well as Low Sizergh Barn's own range of cakes, preserves and free range eggs.

Low Sizergh Farm hosts "Growing Well", an inspirational organic growing social enterprise that supports people recovering from mental health problems. The popular farm trail offers the chance to find out more about farming and enjoy the wonderful landscapes of South Lakeland.

The farm is particularly concerned with the welfare of its animals and the wildlife living around the farm, their philosophy is that "happy animals create a good yield".

A Countryside Stewardship Agreement with Natural England helps them to maintain hedgerows and create habitats which enhance and conserve the local landscape and wildlife



Low Sizergh Barn

Success built on a passion for farming, food and the countryside

INVEST IN
South
Lakeland

The family business has evolved and grown over the years, assisted by the hard work of dedicated local people.

Some of their recent successes include winning a Taste Cumbria Gold Champion Award for one of their cheeses. Alison Park, whose family have farmed at Sizergh for over 30 years, attributes this to their "excellent herd of cows" and a dedicated cheesemaker.

When asked what are the best aspects of living and working in South Lakeland, Alison puts it down to "A strong sense of the past which is complemented by the use of new ideas and opportunities. There's frequent cooperation between businesses based on good solid relationships, and a sense that we're in an interdependent network that supports our local economy.

There's no doubt that being in the outdoors makes life properly rounded, but there's a rich cultural life here too".

In the future, Low Sizergh Barn will be looking to improve its existing offer and finding new products and services is at the top of the list – "nothing dramatic, but essential to keep our business vibrant and successful".



Low Sizergh Barn

Low Sizergh Barn
Sizergh
Kendal
Cumbria LA8 8AE

www.lowsizerghbarn.co.uk



Welcome to South Lakeland

A Breath of Fresh Air for Business



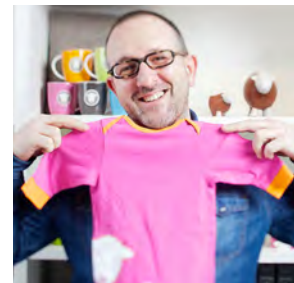
An area known globally for its astounding natural beauty and unique vibrant culture, South Lakeland is also home for a thriving and innovative business environment where companies can become established, grow and prosper.



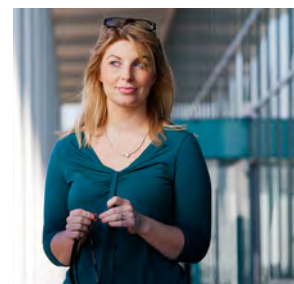
The entrepreneurial business spirit is strongly encouraged in South Lakeland, reflected in the healthy number of fledgling enterprises setting up each year in our region, and our work also encompasses projects designed to help make the first steps to start-up as easy as possible.



The Economic Development Team at South Lakeland District Council are an inward investment service providing information and support to businesses of all sizes, covering all industry sectors, whether you are already here or are looking to locate your operations in South Lakeland.



The Economic Development Team are here to help your business uncover the exciting potential that exists here. Should you have any questions, we are on hand to assist and tell you more about the opportunities to be found in the most beautiful corner of the UK.



Economic Development Team
South Lakeland District Council
South Lakeland House
Lowther Street
Kendal
Cumbria LA9 4DL

Telephone: 01539 793280
Email: info@investinsouthlakeland.co.uk

www.investinsouthlakeland.co.uk

