

INVEST IN
**South
Lakeland**



Houghton Parkhouse

Serious about transporting livestock safely



www.investinsouthlakeland.co.uk

Houghton Parkhouse

Serious about transporting livestock safely.

INVEST IN
**South
Lakeland**

Three generations of Design and Manufacturing expertise are housed within the Houghton Parkhouse factory at Milnthorpe.

The family business has one of the foremost names in the design and fabrication of multi-deck livestock transporters; exhibition vehicles, agricultural and 4x4 livestock trailers.

John Houghton founded the company with a vision and clear understanding of animal welfare using his creative background as a fine cabinet maker, joiner and craftsman wheelwright, Mr Houghton designed his very first "cattle truck" from wood having been asked to repair one involved in an accident. From this, he could see how he could improve the design and thus directly improve the quality of animal welfare during transportation. John refocused his efforts to this new market of livestock transporters.

The Company has notched up some considerable milestones since its creation. In the early years they were the first UK Manufacturer to use steel box section frames, hydraulic tailgates and alloy anti slip surfaces.

It is fair to say that through innovative design and product development, Houghton Parkhouse have possibly done more for the welfare of livestock during transportation than any other company.

The Company have previously achieved the highest acclaim within the transport industry when they were awarded the coveted "Commercial Trailer of the Year" Award. The most recent award received by Houghton Parkhouse was in 2017 when they were awarded a Gold Medal, the highest award possible, by The Royal Highland Technical Innovation Awards for the invention of the Platinum T35 Livestock Trailer.

Michael Houghton, John's son, joined the company in the early 1970s and is Managing Director of Houghton-Parkhouse today. To compliment the team Michael's sons Steven and David have joined the Company having both worked in the UK and Canada in design engineering and production.

The manufacturing facilities also include Parkhouse Commercials, the commercial vehicle painting and bodywork repair division of Houghton-Parkhouse, with a fully equipped paint shop and shot blasting facility.



Houghton Parkhouse

Serious about transporting livestock safely

INVEST IN
**South
Lakeland**

Houghton Parkhouse employs 70 full time staff, a workforce which includes dedicated management and design teams working alongside skilled craftsmen, engineers, fabricators, electricians and metal workers. The majority of whom are local to South Lakeland and many received their training from senior craft engineers and regional training programmes including apprentices within the Company.

Shortly, there will be several new apprentices at the Company, ensuring continuity of skills old and new.

“It is important,” explained Director Michael Houghton, “for our apprentices to work with senior craftsmen to ensure they gain a secure knowledge and practical skills required for the advanced engineering procedures employed in the production of our product range”.

The Livestock Transporters manufactured are 100% Cumbrian products with every stage of design, manufacture and construction taking place in South Lakeland.

Houghton Parkhouse believe, and have done for over 65 years, that the future of the company is best positioned in South Lakeland, being close to the M6 corridor for clients and suppliers ease of access, and for staff being able to enjoy employment close to their homes and with excellent education facilities for their families.



Houghton-Parkhouse Ltd
Milnthorpe
Cumbria LA7 7RF

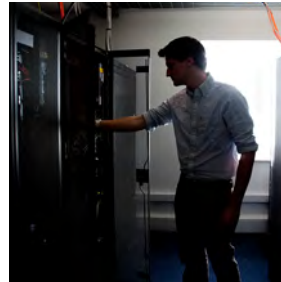
Telephone. 015395 63347
Email. sales@houghtons.com
www.houghtons.com

Welcome to South Lakeland

A Breath of Fresh Air for Business



An area known globally for its astounding natural beauty and unique vibrant culture, South Lakeland is also home for a thriving and innovative business environment where companies can become established, grow and prosper.



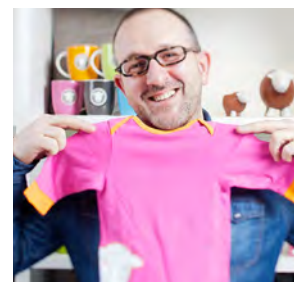
The entrepreneurial business spirit is strongly encouraged in South Lakeland, reflected in the healthy number of fledgling enterprises setting up each year in our region, and our work also encompasses projects designed to help make the first steps to start-up as easy as possible.



The Economic Development Team at South Lakeland District Council are an inward investment service providing information and support to businesses of all sizes, covering all industry sectors, whether you are already here or are looking to locate your operations in South Lakeland.



The Economic Development Team are here to help your business uncover the exciting potential that exists here. Should you have any questions, we are on hand to assist and tell you more about the opportunities to be found in the most beautiful corner of the UK.



Economic Development Team
South Lakeland District Council
South Lakeland House
Lowther Street
Kendal
Cumbria LA9 4DL

Telephone: 01539 793280
Email: info@investinsouthlakeland.co.uk

www.investinsouthlakeland.co.uk

