

INVEST IN
**South
Lakeland**



Dent Brewery

Real craft ales from the Dales



www.investinsouthlakeland.co.uk

Dent Brewery

Real craft ales from the Dales

INVEST IN
**South
Lakeland**

Tucked away in the South East corner of Cumbria, the picture postcard perfect village of Dent nestles amidst a backdrop of rolling fells and pastureland.

Although very much a part of South Lakeland, Dent is located in the Yorkshire Dales National Park; the narrow, twisting cobbled streets, lined with stone cottages and local shops so typical of the classic Dales village.

A short distance away towards nearby Cowgill, take a turn up a single track hillside lane to Hollins Farm and there you'll find what is widely considered to be the most remote brewery in Great Britain.

Dent Brewery was established in 1990 by Martin Stafford and, at the time, was one of only three microbreweries in Cumbria, a county that now boasts ten times that number. The original intention for the brewery was simply to provide the nearby pubs (mainly the Sun Inn in Dent) with a regular supply of local real ale.

Word quickly spread and production grew to satisfy the demand for the lovely crafted ales from the Dales. Soon the brewery was running at its capacity, with Dent gaining notoriety across the UK as home to one of the best northern microbreweries.

Plans were made to relocate the brewery to help accommodate the growth from demand; Martin sold Hollins Farm to Paul and Judith Beeley and, when the plans for the new brewery site failed to come to fruition, also sold Dent Brewery to Paul and Judith.

The Dent Brewery has seen significant investment over recent years and was completely renovated in 2005. Along with improvements to the brewery buildings (mostly part of the old farm), new mash tun, copper and fermenting vessels and gleaming stainless steel pipework were commissioned with the vessels fabricated by a local metalwork firm in Kendal. The investment in facilities and equipment means that Dent Brewery has grown to a capacity 10 barrels (a brewer's barrel being 36 gallons).



Dent Brewery

Real craft ales from the Dales

INVEST IN
South
Lakeland

The Brewery's output consists of a year-round offering of six award-winning real ales along with a number of seasonal beers and special brews.

The beer names and branding lean heavily on the sheep farming heritage of the region (Ramblau, Ramsbottom, Golden Fleece and Ewetopia) along with the classic Dent Porter, a dark and robust beer with it's name in reference to the nearby railway station on the Settle-Carlisle line and the highest mainline station in the UK.

All the water used in brewing the Dent beers comes from Hollins' Farm's own natural spring up on the fellside, with malts and hops sourced from notable UK producers.

In 2006, the Brewery bought the George & Dragon in Dent village, a lovely local and traditional pub which is considered to be the "brewery tap" - the best place to enjoy one of the brewery's ales.

Head Brewer, Simon Calvert explains why the area is so important to the success of the business "To live in South Lakeland and work in such a beautiful corner of the country is something I can never take for granted. Dent is renowned for its strong community spirit and the brewery stands as a landmark of traditional rural trade. Working here I really feel part of the local heritage".

Dent Brewery's beers can now be enjoyed throughout the UK with many supermarkets, independent and online retailers selling the drinks to a growing audience of beer drinkers who are keen to discover and support the nation's craft brewers.



Dent Brewery
Hollins, Cowgill,
Dent
Cumbria LA10 5TQ
Telephone. 015396 25326
Email. info@dentbrewery.co.uk

www.dentbrewery.co.uk

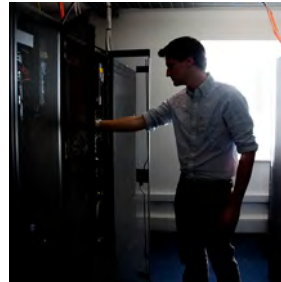


Welcome to South Lakeland

A Breath of Fresh Air for Business



An area known globally for its astounding natural beauty and unique vibrant culture, South Lakeland is also home for a thriving and innovative business environment where companies can become established, grow and prosper.



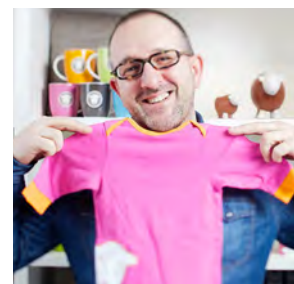
The entrepreneurial business spirit is strongly encouraged in South Lakeland, reflected in the healthy number of fledgling enterprises setting up each year in our region, and our work also encompasses projects designed to help make the first steps to start-up as easy as possible.



The Economic Development Team at South Lakeland District Council are an inward investment service providing information and support to businesses of all sizes, covering all industry sectors, whether you are already here or are looking to locate your operations in South Lakeland.



The Economic Development Team are here to help your business uncover the exciting potential that exists here. Should you have any questions, we are on hand to assist and tell you more about the opportunities to be found in the most beautiful corner of the UK.



Economic Development Team
South Lakeland District Council
South Lakeland House
Lowther Street
Kendal
Cumbria LA9 4DL

Telephone: 01539 793280
Email: info@investinsouthlakeland.co.uk

www.investinsouthlakeland.co.uk

